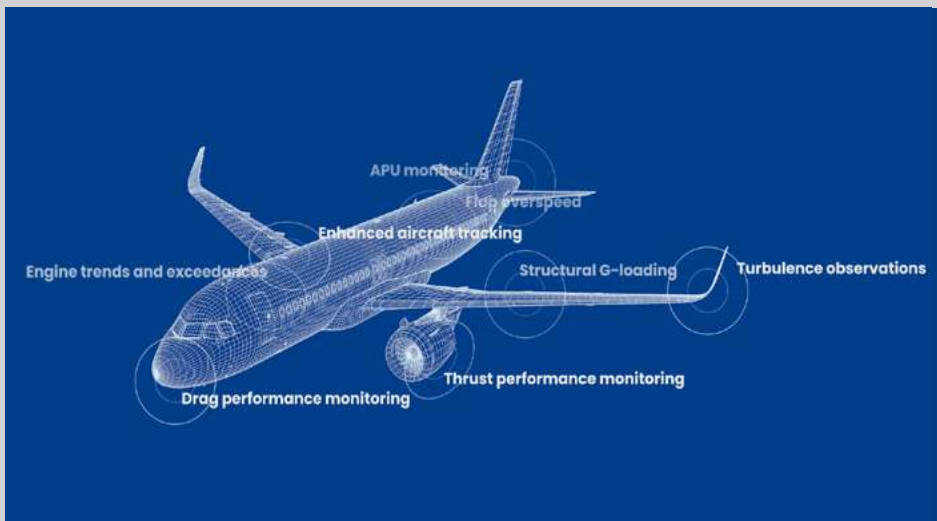




FLEETWATCH

FLIGHT FOLLOWING & GADSS ICAO COMPLIANCE



**Customizable
exception-based
visual alerting**

Configurable Fleet wide situational awareness on a global scale

Global Flight Tracking & Alerting

Track aircraft through the entire flight, including remote areas, for real-time alerting and actionable intelligence

Real-time AFIRS position data is displayed on FleetWatch, FLYHT's aircraft situational display (ASD)

Reporting intervals when integrated with the AFIRS system are fully configurable on the fly (30 seconds – 60 minutes) and appear as real-time plots, showing the exact position of the aircraft.

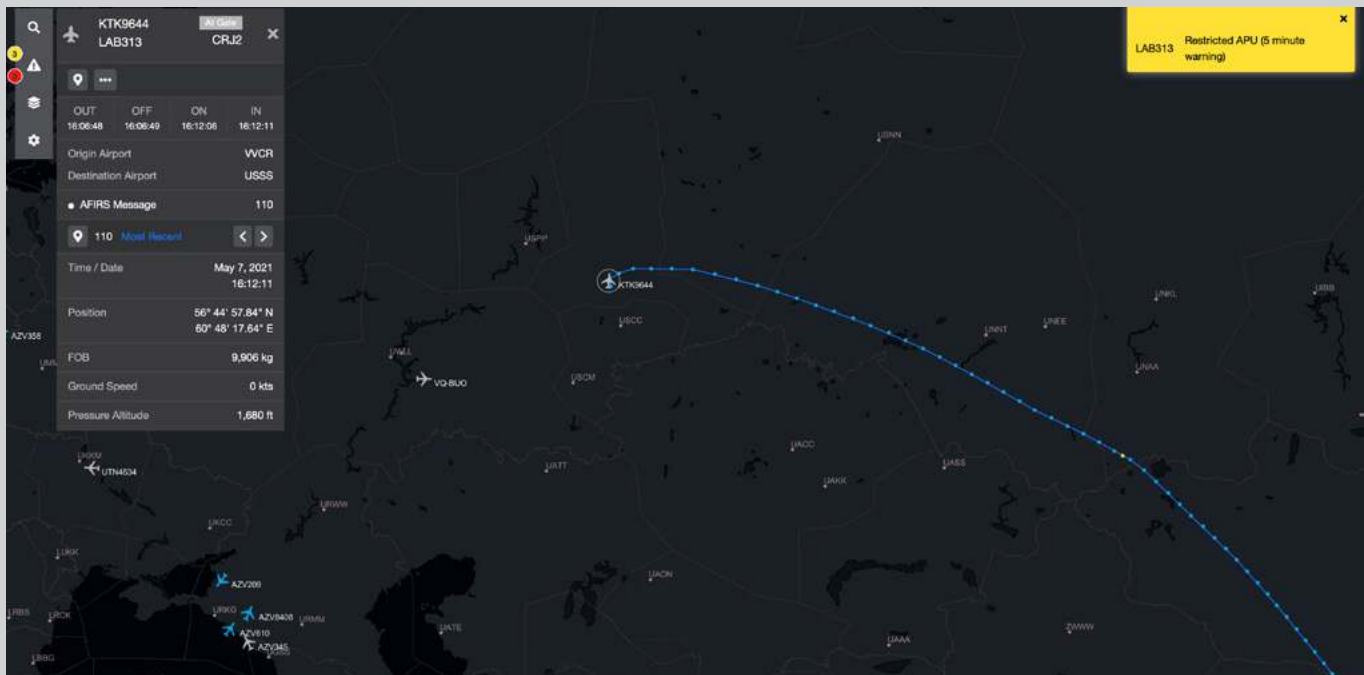
With AFIRS connecting to a variety of onboard systems

- Aircraft data can be used to monitor the status of aircraft
- Additional information such as fuel on board, departure/arrival airports and arrival time, for example, allow for a richer real-time view of the aircraft.

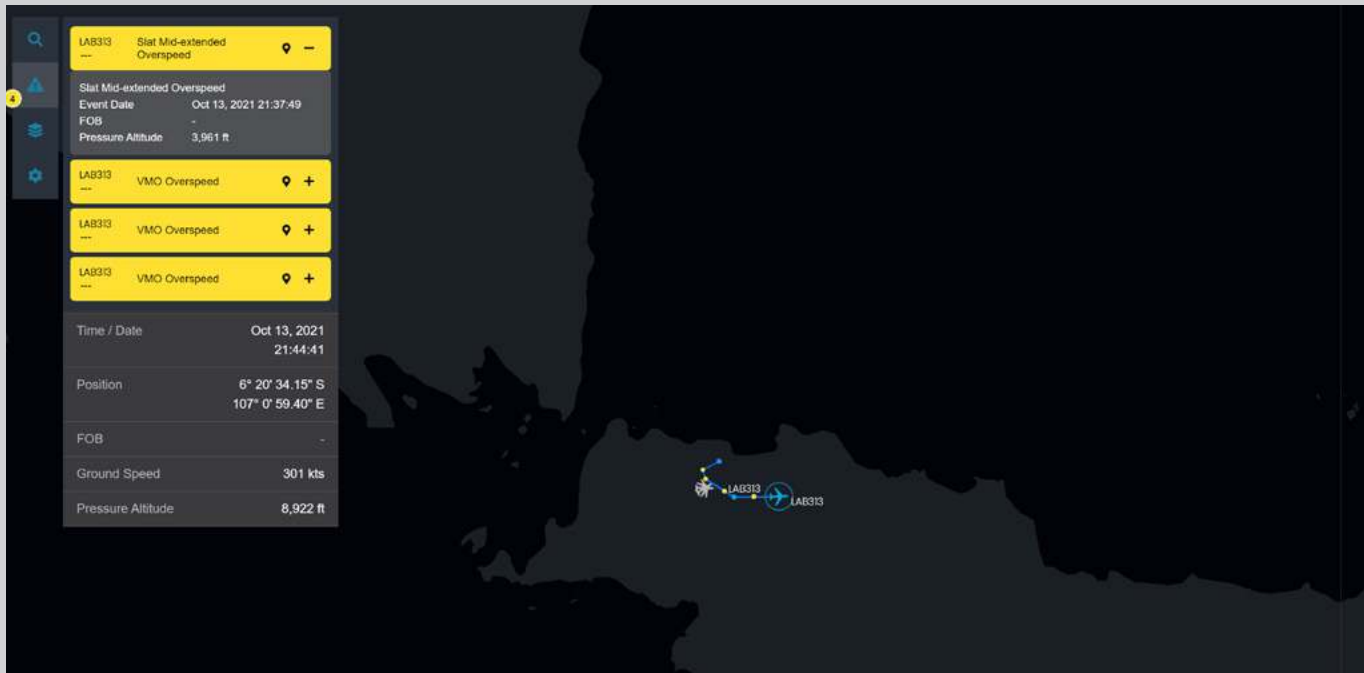
Related Products

- FuelSense
- AFIRS 228 (B, S, TSO)
- ClearPort
- AFIRS Edge

Fleet situational awareness at your fingertips



Real-time awareness of flight and aircraft condition



Canada
#500, 1212 – 31 Avenue NE
Calgary, AB
Canada T2E 7S8

USA
4600 South Syracuse, Suite 900
Denver, CO, USA 80237-2719
USA

Europe
Hanauer Landstrasse 312,
D-60314 Frankfurt a.M.
Germany

China
27 building 3-112,
An De Lu No.55,
Dong cheng District, Beijing
China